

經濟部工業局 函

機關地址：106臺北市信義路三段41-3號
聯絡人：游宣榮
聯絡電話：02-27541255 分機2232
電子郵件：sryou@moeaidb.gov.tw
傳真：02-27048128



108臺北市萬華區長沙街2段73號3樓

受文者：台北市儀器商業同業公會

發文日期：中華民國102年8月30日

發文字號：工電字第10200749580號

速別：普通件

密等及解密條件或保密期限：

附件：如文

主旨：有關廠商申請專案進口大陸製「數位電費計Energy Cost Monitor」1,144 PCE及「電源監測器Plug in Power Mornitor」2,028 PCE一案（貨品規格如附），請貴公會於文到7日內就該貨品是否為國內無產製惠復卓見供參，請查照。

說明：

- 一、依據本部國際貿易局102年8月29日貿服字第1020152180號函辦理。
- 二、旨揭貨品規格倘經貴公會查認國內已有產製且能供應，務請提供國內有生產是類貨品之廠商名稱及產能等資料，俾憑研處。

正本：台灣區電機電子工業同業公會、台北市儀器商業同業公會

副本：經濟部工業局電子資訊組

局長沈榮津

依照分層負責規定授權單位主管決行

To 2311 陳 15

專案進口未開放大陸物品申請書

CCC 號列：

9028.30.00.00-4

(申請人如無法確認貨品號列或對貨品號列有疑義者，請先向進口地海關申請進口貨物稅則預先審核)

中、英文貨品名稱：

數位電費計/電源監測器

Energy Cost Monitor/PLUG IN POWER MORNITOR

貨品規格：(請敘明材質、成分、組成分百分比、尺寸、製造過程等)

如附件 DM 及手冊。

數量或重量：(請填列明確單位)

電源監測器

(230V 英規)2000I03 @48pcs/箱, 總共 1008 pcs, @10.94kgs/箱, 總重約 230kgs

(110V/220V 台規)2000J02 @12pcs/箱, 總共 1020pcs@8.15kgs/箱, 總重 267.75kgs

數位電費計

(220V 美規)2022H01 @48pcs/箱, 總共 1000 pcs, @7.59kgs/箱, 總重約 160kgs

(230V 法規)2022W06 @48pcs/箱, 總共 144 pcs, @12kgs/箱, 總重約 36kgs

進口理由：

1. 台灣銷售、轉銷國外、客戶樣品供給。
2. 以期了解客戶需求做為開發新產品的準備。

進口用途及流向：

3. 台灣銷售、轉銷國外、客戶樣品供給。
4. 一般消費者、各大電子材料行、國外需求買家。

加工後製成品名稱：已經是成品

2013/8/28下午 03:41:18 搜尋結果 共1筆記錄 , 1/ 1 頁

貨品輸出入規定查詢結果				
CCC號列	貨名	號列實施	輸入規定	輸出規定
9028.30.00.00-4	電力供應錶 Electricity supply meters	078/01/01	MWO	

Model SPG-26MS 電力省電監測器 使用說明書

承蒙您的惠顧購買本公司產品，非常
謝謝。在使用本產品前，請詳細閱讀
「使用說明書」的各章節內容，並妥
為保存。

安全訊息：

- 本機只能用於電源為AC85~250V，
60Hz的地區，請勿用於除此之外的
地區。
- 本機最大的輸出電流為15A。在Over
current 時電錶讀值會閃爍且蜂鳴
器會發出嗶嗶聲。
- 請勿打開外蓋或擅自進行修理，請
將維修工作委託給專業維修人員。

警告：

為了避免發生火災或觸電事故，
請勿讓本機淋雨或受潮。

1. 安裝：

本機內含多功能電源電錶。使用時只
要將本機直接插入牆上的電源插座上，
再將欲控制的電器產品插入本機
插座即可如圖三所示。

2. 操作：

- 按 Volt 顯示電源插座電壓值
- 按 Amp 顯示外接電器之所耗電流值
- 按 Watt 顯示Watt值再按一次顯示
VA 值，每按一次按鍵即切換顯示值
Watt ↔ VA
- 按 Hz 顯示供電頻率 Hz 再按一次
顯示用電效率 PF，每按一次按鍵即
切換顯示Hz ↔ PF
- 按 KWH 顯示用電度數再按一次則顯
示用電時間，每按一次按鍵即切換
顯示KWH ↔ KWH TIME

規格表

項目	範圍
電壓錶	85.0~250.0 Vrms
電流錶	0.00~15.00 Arms
瓦特錶	0~3750 Watt
伏安錶	0~3750 VA
頻率錶	57.0~63.0 Hz
功率因素錶	0.00~1.00
用電度數錶	0.00~9999 KWH
用電時間	00:00~9999
測量時間	1 Sec

項目	精確度
	最大誤差
電壓錶	1%
電流錶	1%
瓦特錶	2%
伏安錶	2%
頻率錶	2%
功率因素錶	0.03
用電度數錶	2%
用電時間	30 ppm
測量時間	—

* 誤差值=(讀值+範圍)

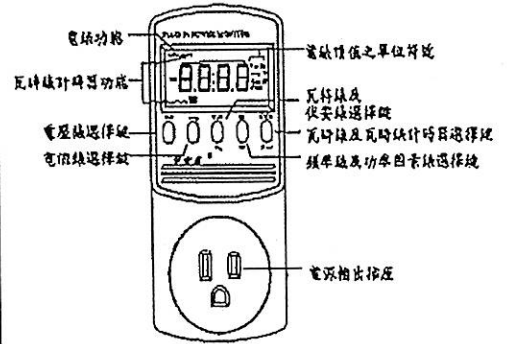
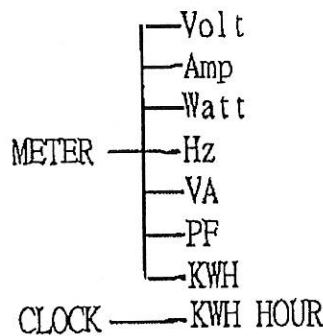
尺寸：長130.0mm
寬 60.0mm
高 96.7mm
重量：145 g

消耗功率：20VAmax

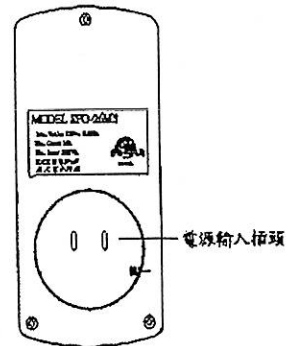
**⚠ 請勿於本產品上使用轉接插頭/
插座，容易因溫度升高熔毀外殼而
發生燃燒的危險。**

松大電子科技有限公司
桃園縣平鎮市大智街40號
TEL：03-4590707
FAX：03-4592356
E-MAIL：sondar8@ms57.hinet.net
http://www.sondar.com.tw

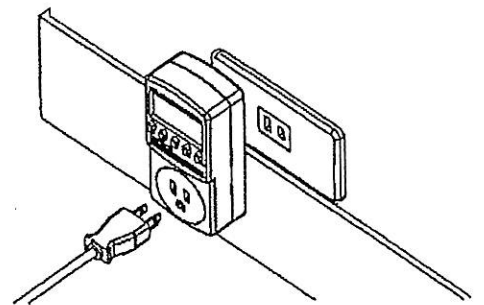
功能結構表



圖一 前面板功能說明



圖二 後面保功能說明



圖三 安裝使用圖

圖七 單一式安裝使用圖

Model 2022W06

Energy Cost Monitor Operation Manual

Thank you for purchasing the Energy Cost Monitor. This operating manual will provide an overview of the product, safety instructions, a quick guide to operation, and complete instructions for correct usage. Take the time to completely review these instructions as well as safety warnings to ensure your best use of the product.

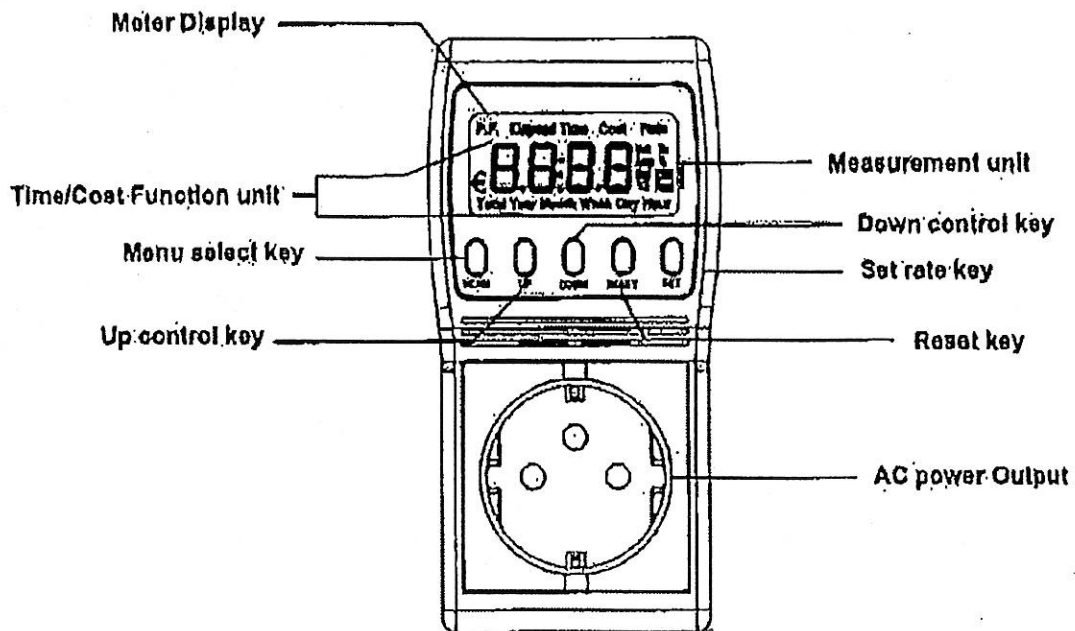
Safety Instructions:

- The operating voltage is limited to +/- 10% of Line voltage 230Vac. Do not use it in other voltage rating.
- The maximum output current is 15A.
- To reduce the risk of electric shock, do not remove cover. No user-serviceable parts inside. Refer servicing to qualified service personnel.

Warning:

- To reduce the risk of fire or electric shock, do not expose this appliance to rain or moisture.

Panel Description:



Quick Start Guide:

It is a multiple measure functions AC power meter including Voltage, Current, Watt, VA, Frequency, Power Factor, power consumption and actual cost of power consumed or projected cost. Use these quick start instructions to get up and running in just a few minutes. Be sure to review all the operating instructions later to ensure full enjoyment of the product.

1. Connect the Energy Cost Monitor unit to the outlet and the appliance to the unit.
2. The LCD will display Volt, to cycle through the various measurements, Volt, Amp, Watt, VA, Frequency and Power Factor, press the UP and Down key as desired. The measurement unit currently selected will be indicated in the display.
3. Press the MENU key to cycle through the Cost, Rate, KWH and Elapsed Time.
4. Press and hold RESET key on the unit until "rEst" appears.
5. Press and hold the SET rate key until "Rate" is displayed and the currently set rate flashes.
6. Press the UP and DOWN key to set your desired rate.
7. Press the SET key again. "SAVE" will appear briefly in the display.
8. Press the MENU key until "Cost" is displayed to indicate the actual cost of power consumed.
9. To display the total power consumption, press the MENU key until "KWH" is displayed in the LCD.
10. To display the used time, press the MENU key until "Elapsed Time" is displayed in the LCD.
11. Review the complete operating instructions to familiarize yourself with all features.

Installation:

1. Turn off the appliance and remove the power cord from the outlet. Connect the Energy Cost Monitor unit to the outlet and appliance to the unit.
2. Turn the appliance back on and confirm normal operation. If the appliance does not function, please recheck your installation.
3. LCD display Volt, Voltage of currently measuring.

Meter Measurements:

Press the MENU key until "Volt" is displayed on the LCD. In the Meter Measurement mode, the LCD can display meter reading such as Voltage(in Volt), Current(In Amp), Active power(in Watt), Apparent power(in VA), Frequency(In Hz), and Power Factor(in PF). To display the various meter measurement, press the UP or DOWN key to cycle through as desired.

Cost Measurements:

1. To display the actual cost of power consumed or projected cost, press the MENU key until "Total", "Cost" are displayed on the LCD. The amount on the display represents the total cost of power consumption by attached appliance. It is calculated from multiplying KWH by utility rate set.
2. Press UP or DOWN key will cycle through the cost projection periods, "Year", "Month", "Week", "Day" and "Hour", will display on the LCD. The numeric display will represent the projected cost to run the attached appliance for the selected period.
3. This projection is a historical measurement of power consumption to predict a certain period power consumption, for example, if the attached appliance is measured 2 hours period, multiply it by 12 is Day projection, multiply it by 84 is Week projection. If the attached appliance is measured 24 hours period, multiply it by 7 is Week project, multiply it by 30 is Month projection. It is obviously, the longer the appliance is measured, the more accurate the projection will be.
4. For some appliances that cycle on and off, the projection can not be accurate until the unit has measured some full on and off cycles. For example, TV, if it is always measured for on period, it will be very difficult to do Day, Week projection unless the TV always on for 24 hours, so TV have to be measured by on and off period to do Day, Week accurate projection. For refrigerator, it will cycle on and off within several hours, it is very easy to do Day, Week, Month projection if it is measured for several hours.
5. Press and hold RESET key for a few seconds, "rEST" will appear briefly and to reset the Cost measurement. KWH and Elapsed Time have also been reset to zero.

Rate display and Setting:

1. To display the current rate used in cost calculation, press MENU key until "Rate" is displayed on the LCD. It will be dollars and cents with a decimal point.
2. Press and hold the SET key for a few seconds, the currently rate will flash, press UP or DOWN key to set your desired rate. The rate is typically charged as dollars(or cents) per KWH which you can find this rate on your utility bill. Then press SET key again, "SAVE" will appear briefly and the desired rate is set successfully.

KWH display:

1. To display the total power consumption in Kilowatt Hours, press the MENU key until "KWH" is displayed on the LCD, it will be from 0.01 KWH to 9999 KWH. The decimal point will shift to accommodate a full reading when the KWH is increased.
2. Press and hold RESET key for a few seconds, "rEST" will appear briefly and to reset the accumulated KWH measurement. Cost measurements and Elapsed Time have also been reset to zero.

Elapsed Time display:

1. To display the total elapsed time that the Power Cost Monitor had been used, press the MENU key until the "Elapsed Time" is displayed on the LCD. It will be from Hours: Minutes (00:00) to Hours (9999) to accommodate a full reading when the used period is increased.
2. Press and hold RESET key for a few seconds, "rEST" will appear briefly and to reset the accumulated Elapsed Time. Cost measurements and KWH have also been reset to zero.

Retained measurements:

1. When power to the Energy Cost Monitor is interrupted, the LCD will go blank and the unit will stop measuring. However all accumulated measurements including total cost measurement, KWH and Elapsed Time will be retained. This is great for user to relocate the Power Energy Cost Monitor to read the display, or to measure another appliance, or to overcome the data lost issue when the utility AC power line is broken accidentally.
2. When the AC power line back or the unit plug another outlet again, the LCD will be initially Voltage measurement, accumulated data will be retrieved by using the keys.

3. Specification:

Model 2022-06		Accuracy		
ITEM	RANGE	ITEM	Max.	Typ.
RMS voltage	207.0~253.0 Vrms	RMS voltage	0.5%	0.2%
RMS current	0.05~15.00 Arms	RMS current	0.5%	0.3%
Active power	10~3795 Watts	Active power	1%	0.5%
Apparent power	10~3795 VA	Apparent power	1%	0.5%
Line Frequency	50.0 Hz	Line Frequency	1%	±0.1Hz
Power Factor	0.00~1.00	Power Factor	0.03	±0.01
KWH	0.00~9999 KWH	KWH	1%	0.5%
Elapsed Time	00:00~9999	Elapsed Time	30 ppm	
		Total Cost	1%	0.5%
Total Cost	0.00~9999	Year Cost	1%	0.5%
Month Cost	0.00~9999	Month Cost	1%	0.5%
Week Cost	0.00~9999	Week Cost	1%	0.5%
Day Cost	0.00~9999	Day Cost	1%	0.5%
Hour Cost	0.00~9999	Hour Cost	1%	0.5%
Rate	0.000~9.999	Fuse Rating	0.2A/250V 3x11mm	

ENVIRONMENT CONDITIONS
IN DOOR USE ONLY
ALTITUDE : UP TO 2000M
OPERATION TEMPERATURE : 5°C~40°C
HUMIDITY : Max.R.H. 80%
OPERATION VOLTAGE IS LIMITED TO ±10% OF LINE VOLTAGE
POLLUTION DEGREE : 2
CAT II

GENERAL SPECIFICATION	
POWER RATING	230Vrms ± 10%, 50Hz
POWER CONSUMPTION	20VA
POWER CABLE LENGTH	0 FEET
H/W/D	130.0mm x 60.0mm x 36.7mm
WEIGHT	Around 145g

- Note: 1. The specification is based on sine wave and PF=1.
 2. The typical accuracy for Voltage is in the range +/- 10% of Line voltage,
 for Current is in the range from 0.2Amp to 15Amp.
 3. The Accuracy=X% (Reading + Range).

4. Maintenance

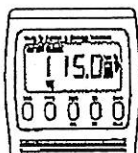
- Protect the meter from adverse weather conditions. The meter is not waterproof. Do not expose the LCD display to direct sunlight for long periods of time.
- CAUTION: To avoid damage to the meter, do not expose it to sprays, liquids, or solvents.
- Clean the exterior of the meter by removing dust with a lint-free cloth.
- Use care to avoid scratching the clear plastic display filter.
- For further cleaning, use a soft cloth or paper towel dampened with water. You can use a 75% isopropyl alcohol solution for more efficient cleaning.
- CAUTION: To avoid damage to the surface of the meter, do not use abrasive or chemical cleaning agents.

Model 2000MU-UK PLUG-IN POWER MONITOR Operation Manual

Congratulations on your purchase, and welcome to Prodigit 2000M Plug-in power monitor. This operation manual will guide you step by step for the various functions of the Power Monitor.

Warning:

- To prevent fire or shock hazard, do not expose the unit to rain or moisture.
- The operating voltage is limited to AC 180 ~250V 50/60 Hz, Don't use it in other voltage ratings.
- Indoor use only.
- The maximum output current is 15A. The buzzer whistles and the reading on the LCD display flashes when over current.
- To avoid electrical shock, do not open the cabinet. Refer servicing to qualified personnel only.



1. Installation: (refer to figure 3)

2000M include 7 precision digital Meter. Plug the 2000M to wall outlet, then connects the appliance or equipment to its receptacle, the LCD display will be lit after power up.

2. The LCD shows all meter readings which includes Volt, Current, Watt, Frequency, Power Factor, and VA, it starts to accumulate KWH and its duration time (hour) after power ON.

3. Press Volt Key for true RMS Voltage display.

4. Press Amp Key for true RMS output current display.

5. Press Watt display Watt meter, then press key to display VA meter, and active power for 1 second each automatically.

Wa|VA Key is a toggle function Key, the LCD will show Watt is the active power, and VA is the apparent Power. (VA = Vrms Arms)

6. HZ/PP is a toggle function key, the LCD will show the sequence of HZ → PP → HZ → HZ is the Frequency of output Voltage, where PP is the Power Factor (ie PF=W/Vrms Arms).

7. Press KWH shows the energy consumption, then press key to display the time (hour) and active power for 1 second each automatically.

KWH/Hour is a toggle function key, the LCD will show the sequence of KWH → Hour → KWH. Kilo-Watt-Hour (from 0.01 KWH to 999 KWH) is electronic energy. Hour is the duration time after Power On (ie from 1 minute ~ 9999 Hour).

8. MAINTENANCE

Protect the meter from adverse weather conditions. The meter is not waterproof. Do not expose the LCD display to direct sunlight for long periods of time.

CAUTION: To avoid damage to the meter, do not expose it to sprays, liquids, or solvents.

Clean the exterior of the meter by removing dust with a lint-free cloth.

Use care to avoid scratching the clear plastic display filter.

For further cleaning, use a soft cloth or paper towel dampened with water. You can use a 75% Isopropyl alcohol solution for more efficient cleaning.

CAUTION: To avoid damage to the surface of the meter, do not use abrasive or chemical cleaning agents.

Model 2000M Specifications:

ITEM	RANGE	
RMS voltage	180.0~250.0 Vrms	
RMS current	0.00~15.00 Arms	
Active power	0~3750 Watts	
Apparent power	0~3750 VA	
Line Frequency	47.0~63.0 Hz	
Power Factor	0.00~1.00	
Energy Quantity	0.00~9999 KWH	
KWH Hour	00:00~9999	
Items	Accuracy	
	Max.	Typ.
RMS voltage	1%	0.2%
RMS current	1%	0.3%
Active power	2%	0.5%
Apparent power	2%	0.5%
Line Frequency	2%	±0.1Hz
Power Factor	0.03	0.01
Energy Quantity	2%	0.5%
KWH Hour	30 ppm	
Fuse Rating	0.2A/250V 3x11mm	

Note: The typical accuracy for voltage is in the range of 190V~250V; and for current is in the range of 0.2A~15A.

Environment Condition:

- Altitude up to 2000m
- Operation temperature 5°C~40°C
- Max. R.H. 80%
- CAT II
- Pollution degree 2

CAT II: Measurement category II is for measurements performed on circuits directly connected to the low voltage installation.

Dimension: 130.0mm(H) x 60.0mm(W) x 36.7mm(D)

Weight: 145 g (one piece.)

Power consumption: 20 V_{max}

PRODIGIT ELECTRONICS CO., LTD.

8F, No.88, Baojhong Rd., Sindian City,
Taippei County 231, Taiwan (R.O.C.)
TEL : 886-2-2918-2620
FAX : 886-2-2912-9870
E-MAIL: Sales@prodigit.com.tw
<http://www.prodigit.com.tw>

Funcion Configuration Table

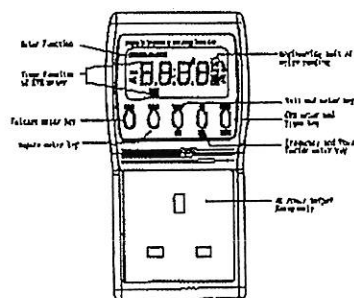
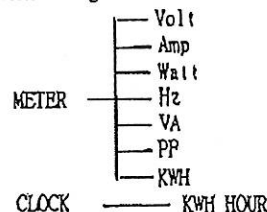


Figure 1 2000M Front Panel

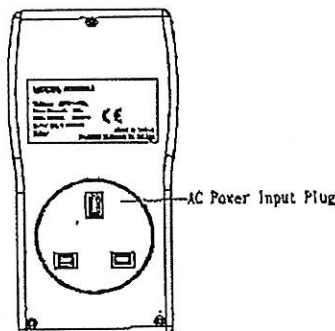


Figure 2 2000M Rear Panel

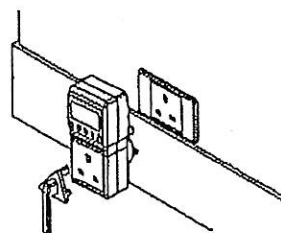


Figure 3 2000M Installation Diagram

Model 2022 數位電費計 使用說明書

承蒙您的惠顧購買本公司的產品，非常感謝。

在使用本產品之前，請詳細的閱讀本「使用說明書」各章節的內容，並妥善的保存。

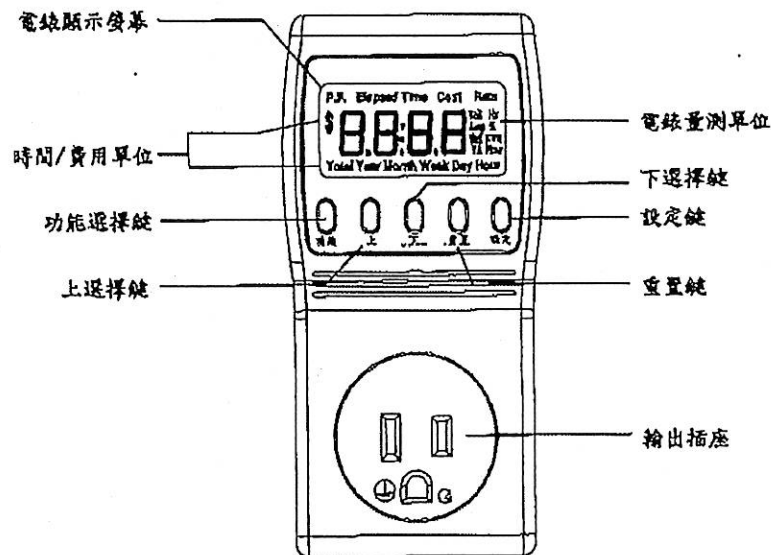
安全訊息：

- 本機只能用於電源為 AC 95~125V 或 207~253V，50 ~ 60Hz 的地區，請勿用於除此之外的地區。
- 本機最大的輸出電流為 16A。
- 請勿自行打開外蓋或擅自進行修理。請將維修工作委託給專業維修人員。

警告：

為了避免發生火災或觸電事故，請勿讓本機淋雨或受潮。

顯示說明：



簡易操作使用：

本產品是個多功能的家用電力電錶，它可以顯示電壓(Volt)·電流(Amp)·瓦特(Watt)·伏安(VA)·頻率(Hz)·功率因素(P.F %)·用電度數(KWH)及其用電費用或預估未來一段時期的電費，您可先參照這段簡易操作使用幾分鐘，熟悉及確認此產品功能正常，但往後請務必詳讀完整的使用說明以能充分使用本產品的全部功能。

1. 請把本產品插在插座上及把您想量測的電器插頭插入本產品輸出插座上。
2. 電錶顯示螢幕會顯示電壓(Volt)，可以藉由按"上"選擇鍵，"下"選擇鍵循環的來回顯示電壓(Volt)·電流(Amp)·瓦特(Watt)·伏安(VA)·頻率(Hz)·功率因素(P.F %)。
3. 連續按住"功能"選擇鍵，可顯示電費(Cost)·費率(Rate)·用電度數(KWH)及用電時間(Elapsed Time)。
4. 持續按住"重置"鍵直到"rEst"出現。
5. 持續按住"設定"鍵直到"Rate"出現及已設定的費率閃爍。
6. 可使用"上"選擇鍵，"下"選擇鍵設定費率。
7. 再按住"設定"鍵即可儲存費率，"SAVE"會短暫出現表示儲存完成。
8. 按住"功能"選擇鍵找到電費(Cost)顯示，其數字即表示目前電器使用到現在的電費。
9. 再按"功能"選擇鍵找到用電度數(KWH)顯示，其數字即表示目前電器使用到現在的用電度數。
10. 再按"功能"選擇鍵找到用電時間(Elapsed Time)顯示，其數字表示目前電器使用到現在的用電時間。
11. 請務必詳讀完整的使用說明以能充分使用本產品的全部功能。

安裝：

1. 請先關掉想要量測的電器同時拔出插頭，再把本產品插入插座及把電器插頭插入本產品的輸出插座。
2. 再把電器重新開機確定其正常工作。假如電器有不正常狀況請再檢查連接的插頭插座。
3. 電錶顯示螢幕會顯示電壓(Volt)，其值即是目前工作電壓。

電表功能：

按住"功能"選擇鍵找到電壓(Volt)，本機即是在電錶功能模式，配合"上"選擇鍵，"下"選擇鍵可隨意循環顯示電壓(Volt)，電流(Amp)，瓦特(Watt)，伏安(VA)，頻率(Hz)，及功率因素(P.F %).

電費顯示：

1. 按住"功能"選擇鍵可找到"Total"、"Cost"顯示，其數值即表示電器用電費用的總數及用電度數和費率的乘積。
2. 按住"上"選擇鍵或"下"選擇鍵可循環來回找到年(Year)，月(Month)，週(Week)，日(Day)和時(Hour)，其相對應的數值即是預估電器使用一段時期的電費。
3. 這個電費預估值是根據過去一段時期的數值去推估而來的，例如，量測電器 2 個小時的值再乘上 12 即是日(Day)的推估電費，乘上 64 即是週(Week)的推估電費，假如量測電器 24 小時後，再乘上 7 即是週(Week)的推估電費，乘上 30 即是月(Month)的推估電費，很明顯的量測時間愈久，推估的電費愈準確。
4. 某些電器及使用習慣會有循環式開關，電費預估必須有幾次的開關才能有比較準確的預估值，例如電視，假如都是在開機狀態下量測，會相當不容易推估日(Day)，週(Week)的值，除非電視是 24 全天開著，所以電視必須經過幾次的開關使用後其預估值才會比較準確，另外冰箱會在幾個小時左右自動啟動及只提供保溫效果，所以量測冰箱經過幾個小時後便容易得到準確的推估值。
5. 持續按住"重置"鍵幾秒鐘後，"rEst"會短暫出現代表電費、用電度數及用電時間已被歸零。

費率顯示及設定：

1. 按住"功能"選擇鍵可找到"Rate" 顯示，代表目前已設定的費率。
2. 持續按住"設定"鍵幾秒鐘後目前已設定的費率值會閃爍，按住"上"選擇鍵或"下"選擇鍵可以設定新費率，費率的數值可以在電力公司給的帳單上查到，應該是每度多少錢，再持續按住"設定"鍵後"SAVE" 會短暫出現代表新費率已設定成功。

用電度數顯示：

1. 按住"功能"選擇鍵可找到"KWH" 顯示，代表目前已使用累積的用電度數，數值會是 0.01 KWH 到 9999KWH，小數點會隨著數字的增加而自動進位。
2. 持續按住"重置"鍵幾秒鐘後，"rEst"會短暫出現代表累積用電度數，電費及用電時間已被歸零。

用電時間顯示：

1. 按住"功能"選擇鍵可找到"Elapsed Time" 顯示，代表目前已使用累積的用電時間，數值會是從小時:分鐘(00:00)到小時(9999) 小數點會隨著數字的增加而自動進位。
2. 持續按住"重置"鍵幾秒鐘後，"rEst"會短暫出現代表累積用電時間，用電度數及電費已被歸零。

記憶功能：

1. 當本機在正常工作時突然斷電，電錶顯示螢幕會消失及無法繼續量測，此時已累積用電度數，電費及用電時間會被自動儲存，此特性可以使您自由的更換其他插座、其他想量測的電器並且不用擔心突然的斷電。
2. 當本機重新插上插座或是電重新供電後，電錶顯示螢幕會顯示電壓(Volt)，儲存的數值可隨意讀取。

規格

Model 2022				
項目	範圍		精確度	
	110V	220V	最大誤差	一般誤差
電壓錶(Volt)	95.0 ~ 125.0 Vrms	207.0 ~ 253.0 Vrms	0.5%	0.2%
電流錶(Amp)	0 ~ 15.00 Arms		0.6%	0.3%
瓦特錶(Watt)	0 ~ 1875 Watts	0 ~ 3795 Watts	1%	0.5%
伏安錶(VA)	0 ~ 1875 VA	0 ~ 3795 VA	1%	0.6%
頻率錶(Hz)	50 ~ 60.0 Hz		1%	±0.1Hz
功率因素錶(P.F.)	0.00 ~ 1.00		$\frac{Watt}{V_{rms} \times A_{rms}}$	
用電度數錶(KWH)	0.00 ~ 9999 KWH		1%	0.5%
用電時間(Time)	00:00 ~ 9999		30 ppm	
目前合計費用(Total)	0.00 ~ 9999		1%	0.5%
預算年費用(Year)	0.00 ~ 9999		1%	0.5%
預算月費用(Month)	0.00 ~ 9999		1%	0.5%
預算周費用(Week)	0.00 ~ 9999		1%	0.5%
預算日費用(Day)	0.00 ~ 9999		1%	0.5%
預算時費用(Hour)	0.00 ~ 9999		1%	0.5%
費率(Rate)	0.000 ~ 9.999			
量測時間	1 Sec			

使用環境條件		一般規格	
室內使用		輸入電壓	110V 110 伏特 ± 10% · 60Hz
海拔高度 2000 公尺以下			220V 220 伏特 ± 10% · 60Hz
操作溫度 : 5°C ~ 40°C		消耗功率	110V 1 瓦
相對濕度 80%以下			220V 2 瓦
輸入電壓必須在市電額定電壓±10%內		尺寸	長 130.0mm x 寬 60.0mm x 高 96.0mm
污染等級 : 2		重量	大約 145g

- 備註：1. 此規格是根據正弦波及功率因素等於 1。
 2. 一般誤差的條件為電壓於市電額定電壓 +/- 10%，電流為 0.2 安培至 15 安培。
 3. 精確度 = X% (讀值 + 範圍)。

維護

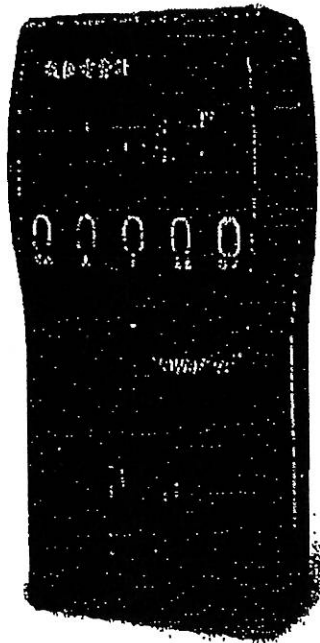
- 為維護本機壽命，請勿讓本機接觸及受潮，也避免長時間在日光下直接曝曬。
- 清潔本機外觀時須將本機拔除插座再使用材質柔軟布擦拭本機。如遇到難擦拭的髒污可將布用水沾溼或用稀釋酒精(75%)擦拭。
- 警告：請勿使用有機或化學溶劑清潔本機，以避免本機外觀損壞。



請勿於本產品上使用轉接插頭/插座，容易因溫度升高熔毀外殼而發生燃燒的危險。

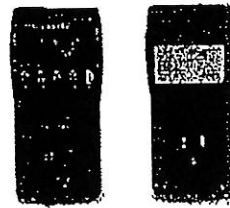
博計電子股份有限公司
 PRODIGIT ELECTRONICS CO., LTD.
 電話：(02) 2918-2620
 傳真：(02) 2912-9870
 E-MAIL：sales@prodigit.com.tw
 http://www.prodigit.com.tw

Code : 2022



數位電費計

多功能電源監測計費顯示器



110V
220V

特點

- 使用大型LCD顯示螢幕易於觀測。
- 按鍵簡單操作容易。
- 隨插即用，僅需將本機連結於電源插座及電器之間即可使用。
- 具有八項參數量測監視功能。
- 過電流警示功能，當電力使用超出最大電流時顯示閃爍，蜂鳴器發出警告音警示。
- 電力消耗計費及預算功能，可計算電器消耗費用，且預算電器年、月、日、時之消耗費用，提供節能節費的最佳參考資訊。
- Data儲存，當電源中斷時可維持計算累計之資料，電源恢復時繼續累計。

規格

產品名稱	2022 數位電費計 PowerPro®
最大電壓	110V/125伏，220V/253伏
最大電流	15安培
最大功率	110V/1875瓦，220V/3795瓦
體積	13.6 x 6 x 3.6cm (HxWxD)
重量	145g
適用電壓	110V/115 220V/225



